



Michael Neville
Personal Work



produceriZm Sculptures, 2017 (made in collaboration with Mark Dineen and the Bennett Elementary School 3rd grade class)
Plaster gauze, paint



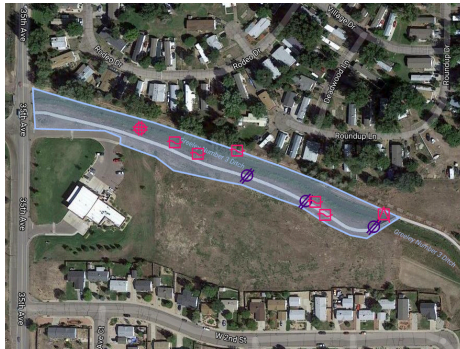
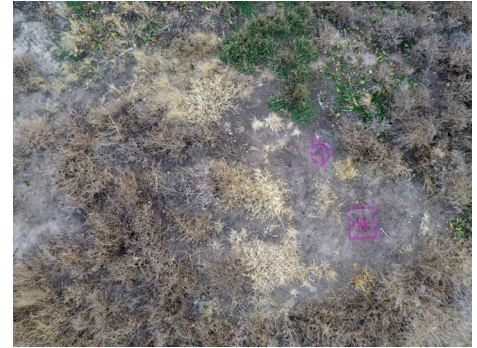
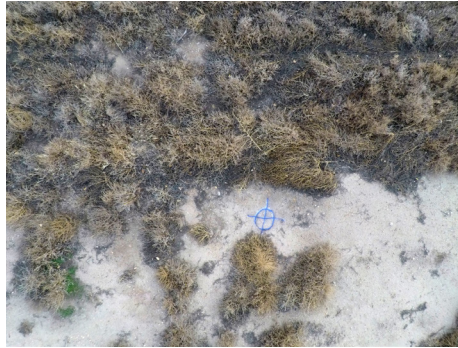
produceriZm Reliefs, 2017 (made in collaboration with Mark Dineen)
Plaster, paint



produceriZm Prints, 2017 (made in collaboration with Mark Dineen)
Screenprinted ink



produceriZm Exhibition, 2017 (interior view)
Simone DeSousa Gallery, Detroit, MI



Big Ditch Glyphs, 2017 (made in collaboration with Mark Dineen and University of Northern Colorado ART 308/508 Art & Ideas: Land Art students)
(above) Spray painted glyphs along #3 Ditch in Greeley, CO / (below) Google Map screenshots of sites and geotagged glyphs



Big Ditch Exhibition, 2017 (a collaboration with Mark Dineen and University of Northern Colorado ART 308/508 Art & Ideas: Land Art students)
Oak Room Gallery, University of Northern Colorado, Greeley, CO



Rigor Borealis, 2016 (made in collaboration with Mark Dineen and Lawrence Technological University ARC 5804 Critical Practice Studio students)

Vinyl, spray paint, urethane expanding foam, lights, smoke machines



Baralaye Carafe Set, 2016 (made in collaboration with Mark Dineen and Ebitenyefa Baralaye)
Slip cast stoneware, glaze



Phalt Series, 2016 (made in collaboration with Mark Dineen)
Gravel, resin, wax, pigment



Restoration Mediation, 2016 (installed at the Gladstone Hotel, Toronto, ON)
Paper pulp, wood, wood stain, black tea, light



Paleo Pals Play Place, 2014
Paper pulp, led light



Colonial Turds, 2013
Cardboard pulp, natural dye, hardwood



Rocking Lump, 2013
Cardboard pulp, hardwood



City Turds, 2014
Paper pulp, sumi ink, hard maple





Fola Bowl, 2015
Ash wood, leather dye



Balancing Rocks, 2013
Papier-mâché





My First Drum Circle!, 2013
Papier-mâché, cardboard, PVC, rawhide



Widdle Bwick Kawt, 2013
Pine, papier-mâché



Lighting Concept/Installation, 2014 (installed at Oxbow School of Art, Saugatuck, MI)
Paper pulp, bioplastic